

YASKAWA MP Series - Extension (Ethernet)

HMI Setting:

| Parameters | Recommended | Options | Notes |
|---------------------|--|---------|-------|
| PLC type | YASKAWA MP Series - Extension (Ethernet) | | |
| PLC I/F | Ethernet (UDP) | | |
| Port no. | 10000 | | |
| PLC sta. no. | 1 | | |

PLC Setting:

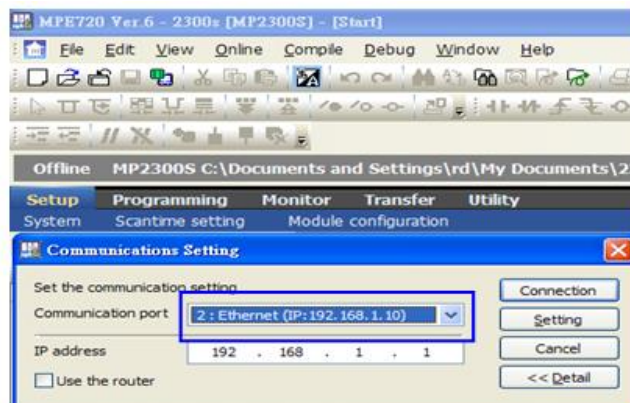
Yaskawa PLC Communication Parameter Settings

(1) PLC Factory Communication Parameter Settings:

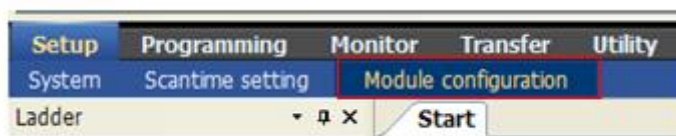
| Item | Set |
|------------------------------------|---------------|
| IP Address | 192.168.1.1 |
| Subnet Mask | 255.255.255.0 |
| Gateway IP Address | 0.0.0.0 |
| System Port No. | 10000 (UDP) |
| TCP Zero Window Timer Value | 3 (s) |
| TCP Retry Time | 500 (ms) |
| TCP Close Time | 60 (s) |
| IP Assemble Time | 30 (s) |
| Max. Packet Length | 1500 (bytes) |

(2) Setting Steps:

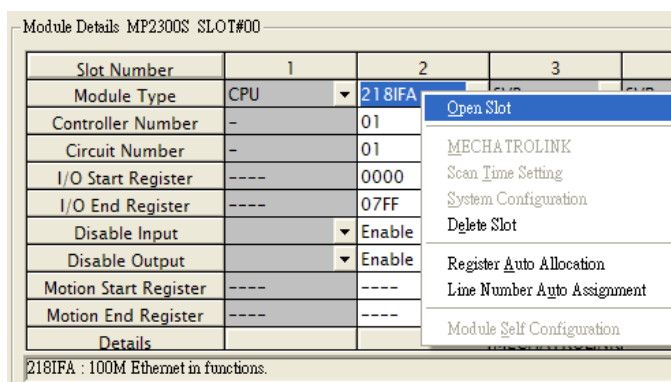
1. Set IP for PLC.



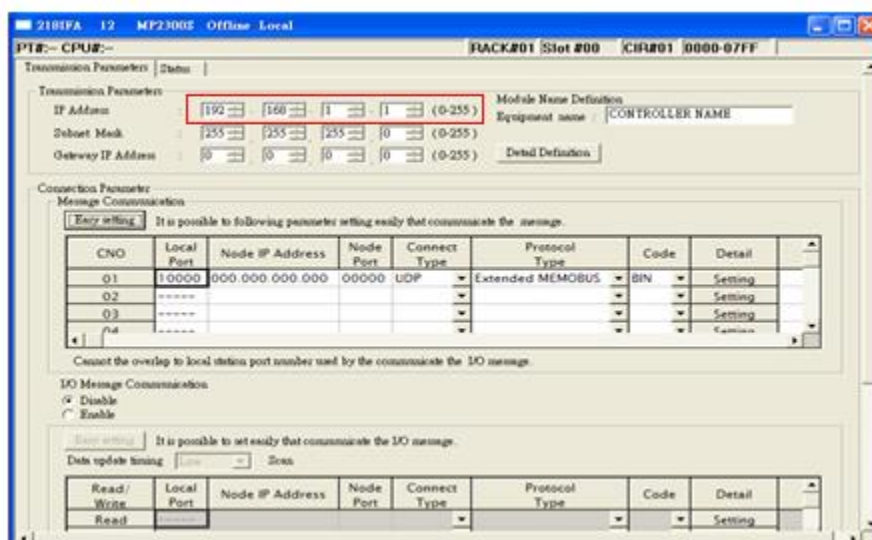
2. Communication parameter setting.



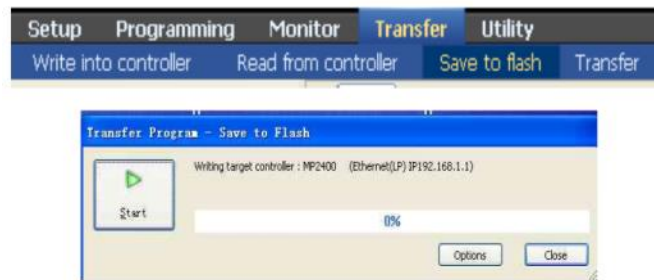
3. Go to Module Details and select [2181FA] for setting relevant parameters for Ethernet transmission.



4. The settings are shown below, PLC IP can't be repeated.

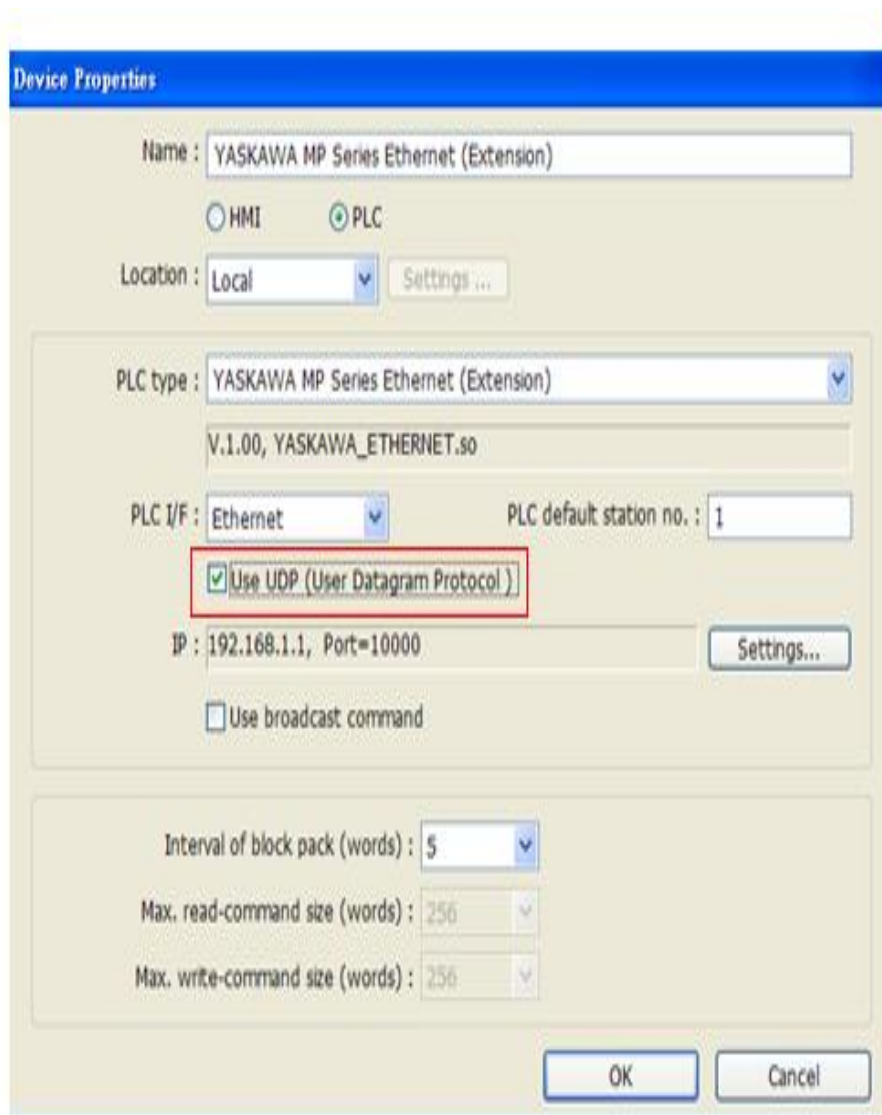


5. Download PLC communication parameters to PLC, and restart the controller.



(3) HMI Settings:

1. Select Ethernet for PLC I/F.
2. Tick [UDP].
3. Set PLC IP and Port, the default Port is 10000.



Device Address:

| Bit/Word | Device type | Format | Range | Memo |
|----------|-------------|--------|------------|------|
| B | SB | DDDDh | 0 ~ 8191f | |
| B | IB | HHHHh | 0 ~ ffff | |
| B | OB | HHHHh | 0 ~ ffff | |
| B | MB | DDDDDh | 0 ~ 65534f | |
| W | SW | DDDD | 0 ~ 8191 | |
| W | IW | HHHH | 0 ~ ffff | |
| W | OW | HHHH | 0 ~ fff | |
| W | MW | DDDDD | 0 ~ 65534 | |
| DW | ML | DDDDD | 0 ~ 65534 | |

Wiring Diagram:

Ethernet cable

